

CATALOGO DE LLANTAS MACIZAS



DOBERMANN



DOBERMANN



LLANTAS PARA MONTACARGAS

Llantas Macizas de Tracción



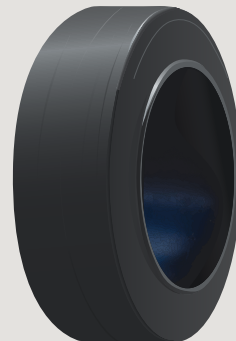
5.00-8
18X7-8
6.00-9
21X8-9
6.50-10
7.00-12
7.00-15
7.50-15
8.25-15
28X9-15 (8.15-15)
250-15
300-15
28X12.5-15
355/65-15

Llantas Macizas de Cargador



10.00-20
12.00-20

Llantas Lisas Aro Metálico



9X5-5
10X4-6.5
10X4.75-6.5
10X5-6.5
12X4.5-8
14X4.5-8
14X5-10
16X5-10.5
16X6-10.5
15X5-11.25
16.25X5-11.25
16.25X6-11.25
18X6-12.125
18X7-12.125
18X8-12.125
21X7-15
21X8-15
22X8-16
22X9-16
22X12-16
28X12-22

Llantas Macizas Non - Marking



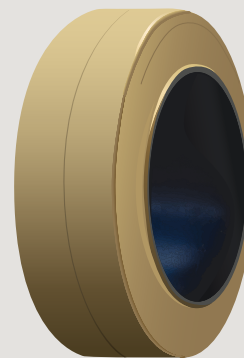
5.00-8
6.00-9
6.50-10
7.00-12

Llantas Labradas Aro Metálico



14X4.5-8
16X5-10.5
16X6-10.5
15X5-11.25
16.25X5-11.25
16.25X6-11.25
18X6-12.125
18X7-12.125
18X8-12.125
21X7-15
21X8-15
22X9-16

Llantas Lisas Non - Marking



14X4.5-8
16X5-10.5
16X6-10.5
15X5-11.25
16.25X5-11.25
16.25X6-11.25
18X6-12.125
18X7-12.125
18X8-12.125
21X7-15
21X8-15
22X8-16
22X9-16
22X12-16
28X12-22

Llantas Macizas Direccional



4.00-8

Llantas Aro Metálico Non - Marking



14X4.5-8
16X5-10.5
16X6-10.5
15X5-11.25
16.25X5-11.25
16.25X6-11.25
18X6-12.125
18X7-12.125
18X8-12.125
21X7-15
21X8-15
22X8-16
22X9-16

Llantas Macizas Mini Cargador



31X10-20
33X12-20



LLANTAS PARA MONTACARGAS

LLANTAS MACIZAS DE TRACCIÓN



El diseño de tres etapas proporciona excelentes niveles de servicio en entornos de tareas y ciclos muy exigentes. Baja resistencia a la rodadura para una mayor eficiencia y baja acumulación de calor para una larga vida útil.



| PART # | SIZE | RIM | COMPOUND | OVERALL DIAMETER | | SECTION WIDTH | | LOAD LIMITS (LBS) | | OTHER VEHICLES | | |
|-----------|-------------------|------|----------|------------------|--------|---------------|--------|-----------------------------|-------|------------------|--------------------|--------------------|
| | | | | mm | inches | mm | inches | Counterbalanced Lift Trucks | | 6km/h (6 mph) | 10km/h (15 mph) | 25km/h (15 mph) |
| | | | | | | | | load | steer | | | |
| DOB-300-T | 5.00-8 | 3.00 | Standard | 443 | 17.4 | 124 | 4.9 | 3120 | 2403 | 3120 | 2833 | 2403 |
| DOB-304-T | 18X7- 8 | 4.33 | Standard | 450 | 17.7 | 147 | 5.8 | 4729 | 3638 | 4729 | 4288 | 3638 |
| DOB-400-T | 6.00-9 | 4.00 | Standard | 521 | 20.5 | 137 | 5.4 | 4156 | 3197 | 4156 | 3770 | 3197 |
| DOB-401-T | 21X8-9 | 6.00 | Standard | 521 | 20.5 | 190 | 7.5 | 6074 | 4674 | 6074 | 5512 | 4674 |
| DOB-500-T | 6.50-10 | 5.00 | Standard | 565 | 22.2 | 151 | 5.9 | 5159 | 3968 | 5159 | 4685 | 3968 |
| DOB-602-T | 7.00-12 | 5.00 | Standard | 651 | 25.6 | 168 | 6.6 | 6437 | 4938 | 6437 | 5831 | 4938 |
| DOB-700-T | 7.00-15 | 5.50 | Standard | 711 | 28.0 | 168 | 6.6 | 7815 | 6008 | 7815 | 7088 | 6008 |
| DOB-720-T | 7.50-15 | 5.50 | Standard | 732 | 28.8 | 193 | 7.6 | 8598 | 6614 | 8598 | 7804 | 6614 |
| DOB-722-T | 7.50-15 | 6.50 | Standard | 732 | 28.8 | 193 | 7.6 | 8598 | 6614 | 8598 | 7804 | 6614 |
| DOB-731-T | 8.25-15 | 6.50 | Standard | 802 | 31.6 | 208 | 8.2 | 10472 | 8047 | 10472 | 9480 | 8047 |
| DOB-742-T | 28X9-15 (8.15-15) | 7.00 | Standard | 687 | 27.1 | 206 | 8.1 | 7595 | 5842 | 7595 | 6889 | 5842 |
| DOB-743-T | 250-15 | 7.00 | Standard | 706 | 27.8 | 211 | 8.3 | 10461 | 8047 | 10461 | 9502 | 8047 |
| DOB-744-T | 250-15 | 7.50 | Standard | 706 | 27.8 | 211 | 8.3 | 10461 | 8047 | 10461 | 9502 | 8047 |
| DOB-750-T | 300-15 | 8.00 | Standard | 806 | 31.7 | 251 | 9.9 | 12897 | 9921 | 12897 | 11707 | 9921 |
| DOB-755-T | 28X12.5-15 | 9.75 | Standard | 691 | 27.2 | 298 | 11.7 | 12181 | 9370 | 12181 | 11056 | 9370 |
| DOB-760-T | 355/65-15 | 9.75 | Standard | 810 | 31.9 | 296 | 11.7 | 17196 | 13228 | 15620 | 14176 | 12015 |



LLANTAS MACIZAS NON - MARKING



El compuesto superior Non-marking (que no deja marcas) proporciona excelente comodidad para el conductor, menor desgaste, desgarro y menor resistencia a la rodadura.



| PART # | SIZE | RIM | COMPOUND | OVERALL DIAMETER | | SECTION WIDTH | | LOAD LIMITS (LBS) | | OTHER VEHICLES | | |
|------------|---------|------|-------------|------------------|--------|---------------|--------|-----------------------------|-------|----------------|----------|--------|
| | | | | mm | inches | mm | inches | Counterbalanced Lift Trucks | | 6km/h | 10km/h | 25km/h |
| | | | | | | | | load | steer | (6 mph) | (15 mph) | |
| DOB-300-NT | 5.00-8 | 3.00 | Non-marking | 443 | 17.4 | 124 | 4.9 | 3120 | 2403 | 3120 | 2833 | 2403 |
| DOB-400-NT | 6.00-9 | 4.00 | Non-marking | 521 | 20.5 | 137 | 5.4 | 4156 | 3197 | 4156 | 3770 | 3197 |
| DOB-500-NT | 6.50-10 | 5.00 | Non-marking | 565 | 22.2 | 151 | 5.9 | 5159 | 3968 | 5159 | 4685 | 3968 |
| DOB-602-NT | 7.00-12 | 5.00 | Non-marking | 651 | 25.6 | 168 | 6.6 | 6437 | 4938 | 6437 | 5831 | 4938 |



LLANTAS MACIZAS DIRECCIONAL



El diseño de nervadura de baja velocidad y alta carga permite una larga vida útil que no requiere mantenimiento.



| PART # | SIZE | RIM | COMPOUND | OVERALL DIAMETER | | SECTION WIDTH | | LOAD LIMITS (LBS) | | OTHER VEHICLES | | |
|-----------|--------|------|----------|------------------|--------|---------------|--------|-----------------------------|-------|----------------|----------|--------|
| | | | | mm | inches | mm | inches | Counterbalanced Lift Trucks | | 6km/h | 10km/h | 25km/h |
| | | | | | | | | load | steer | (6 mph) | (15 mph) | |
| DOB-203-T | 4.00-8 | 3.75 | Standard | 406 | 16.0 | 103 | 4.1 | 2094 | 1609 | 2094 | 1896 | 1609 |

LLANTAS MACIZAS DE CARGADOR



Tacos extra profundos y una banda de rodadura de patrón de bloque completo proporciona una mejor tracción mientras que el diseño de tres etapas proporciona comodidad y larga vida.



| PART # | SIZE | RIM | COMPOUND | OVERALL DIAMETER | | SECTION WIDTH | | LOAD LIMITS (LBS) | | OTHER VEHICLES | | |
|-------------|----------|------|----------|------------------|--------|---------------|--------|-----------------------------|-------|----------------|----------|--------|
| | | | | mm | inches | mm | inches | Counterbalanced Lift Trucks | | 6km/h | 10km/h | 25km/h |
| | | | | | | | | load | steer | (6 mph) | (15 mph) | |
| DOB-1020-T | 10.00-20 | 7.50 | Standard | 1011 | 39.8 | 248 | 9.8 | 13200 | 11000 | 14300 | 11990 | 11000 |
| DOB-10208-T | 10.00-20 | 8.00 | Standard | 1011 | 39.8 | 248 | 9.8 | 13200 | 11000 | 14300 | 11990 | 11000 |
| DOB-1220-T | 12.00-20 | 8.00 | Standard | 1070 | 42.1 | 277 | 10.9 | 16632 | 13860 | 18018 | 15103 | 13860 |

LLANTAS LABRADAS ARO METÁLICO



Sus grandes huellas y alta capacidad de carga proporcionan buena estabilidad y rendimiento a prueba de pinchazos.



| PART # | SIZE | COMPOUND | OVERALL DIAMETER | | SECTION WIDTH | | LOAD LIMITS (LBS) | | | OTHER VEHICLES | | | |
|------------|---------------|----------|------------------|--------|---------------|--------|---------------------------|--------------------------|---------------------------|----------------|----------------|----------------|-----------------|
| | | | mm | inches | mm | inches | Forklifts | | | 6km/h | 10km/h (6 mph) | 15km/h (9 mph) | 25km/h (15 mph) |
| | | | | | | | 10km/h (6 mph) load/steer | 15km/h (9mph) load/steer | 25km/h (15mph) load/steer | | | | |
| DOB-4084-T | 14X4.5-8 | Standard | 336 | 13.2 | 114 | 4.5 | 2579/2116 | 2304/1929 | 1874/1312 | 2767 | 2028 | 1841 | 1378 |
| DOB-6105-T | 16X5-10.5 | Standard | 406 | 16.0 | 127 | 5.0 | 3329/2734 | 2965/2491 | 2414/1973 | 3560 | 2612 | 2370 | 1786 |
| DOB-6106-T | 16X6-10.5 | Standard | 406 | 16.0 | 152 | 6.0 | 4211/3461 | 3759/3164 | 3064/2513 | 4519 | 3307 | 3009 | 2260 |
| DOB-1551-T | 15X5-11.25 | Standard | 381 | 15.0 | 127 | 5.0 | 3064/2513 | 2734/2293 | 2227/1819 | 3285 | 2403 | 2183 | 1642 |
| DOB-6115-T | 16.25X5-11.25 | Standard | 413 | 16.2 | 127 | 5.0 | 3362/2756 | 2998/2513 | 2436/1995 | 3594 | 2635 | 2403 | 1797 |
| DOB-6116-T | 16.25X6-11.25 | Standard | 413 | 16.2 | 152 | 6.0 | 4233/3472 | 3770/3175 | 3064/2513 | 4530 | 3318 | 3020 | 2260 |
| DOB-8126-T | 18X6-12.125 | Standard | 457 | 18.0 | 152 | 6.0 | 4619/3792 | 4123/3461 | 3351/2756 | 4949 | 3627 | 3296 | 2480 |
| DOB-8127-T | 18X7-12.125 | Standard | 457 | 18.0 | 178 | 7.0 | 5622/4619 | 5016/4211 | 4079/3351 | 6019 | 4420 | 4012 | 3009 |
| DOB-8128-T | 18X8-12.125 | Standard | 457 | 18.0 | 203 | 8.0 | 6625/5434 | 5908/4960 | 4806/4729 | 7088 | 5203 | 4729 | 3549 |
| DOB-1157-T | 21X7-15 | Standard | 533 | 21.0 | 178 | 7.0 | 6327/5192 | 5644/4740 | 4597/3759 | 6779 | 4971 | 4519 | 3384 |
| DOB-1158-T | 21X8-15 | Standard | 533 | 21.0 | 203 | 8.0 | 7452/6118 | 6658/5589 | 5412/4431 | 7981 | 5853 | 5324 | 3990 |
| DOB-2169-T | 22X9-16 | Standard | 559 | 22.0 | 229 | 9.0 | 8885/7297 | 7937/6669 | 6460/5291 | 9524 | 6989 | 6349 | 5390 |



LLANTAS ARO METÁLICO NON - MARKING



El compuesto superior que no deja marcas brinda comodidad al conductor, una vida útil prolongada y una excelente solución para la colocación limpia de neumáticos.

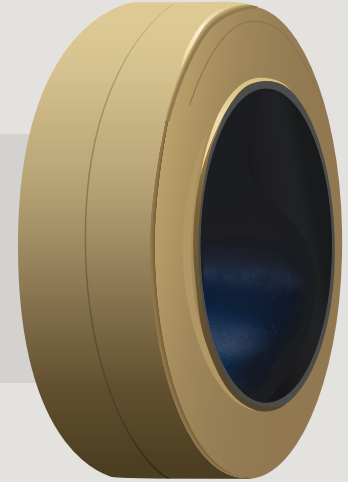


| PART # | SIZE | COMPOUND | OVERALL DIAMETER | | SECTION WIDTH | | LOAD LIMITS (LBS) | | | | | | |
|-------------|---------------|-------------|------------------|--------|---------------|--------|------------------------------|-----------------------------|------------------------------|----------------|----------------|----------------|-----------------|
| | | | mm | inches | mm | inches | Forklifts | | | OTHER VEHICLES | | | |
| | | | | | | | 10km/h (6 mph) load/steer | 15km/h (9mph) load/steer | 25km/h (15mph) load/steer | 6km/h | 10km/h (6 mph) | 15km/h (9 mph) | 25km/h (15 mph) |
| DOB-4084-NT | 14X4.5-8 | Non-marking | 336 | 13.2 | 114 | 4.5 | 2579/2116 | 2304/1929 | 1874/1312 | 2767 | 2028 | 1841 | 1378 |
| DOB-6105-NT | 16X5-10.5 | Non-marking | 406 | 16.0 | 127 | 5.0 | 3329/2734 | 2965/2491 | 2414/1973 | 3560 | 2612 | 2370 | 1786 |
| DOB-6106-NT | 16X6-10.5 | Non-marking | 406 | 16.0 | 152 | 6.0 | 4211/3461 | 3759/3164 | 3064/2513 | 4519 | 3307 | 3009 | 2260 |
| DOB-1551-NT | 15X5-11.25 | Non-marking | 381 | 15.0 | 127 | 5.0 | 3064/2513 | 2734/2293 | 2227/1819 | 3285 | 2403 | 2183 | 1642 |
| DOB-6115-NT | 16.25X5-11.25 | Non-marking | 413 | 16.2 | 127 | 5.0 | 3362/2756 | 2998/2513 | 2436/1995 | 3594 | 2635 | 2403 | 1797 |
| DOB-6116-NT | 16.25X6-11.25 | Non-marking | 413 | 16.2 | 152 | 6.0 | 4233/3472 | 3770/3175 | 3064/2513 | 4530 | 3318 | 3020 | 2260 |
| DOB-8126-NT | 18X6-12.125 | Non-marking | 457 | 18.0 | 152 | 6.0 | 4619/3792 | 4123/3461 | 3351/2756 | 4949 | 3627 | 3296 | 2480 |
| DOB-8127-NT | 18X7-12.125 | Non-marking | 457 | 18.0 | 178 | 7.0 | 5622/4619 | 5016/4211 | 4079/3351 | 6019 | 4420 | 4012 | 3009 |
| DOB-8128-NT | 18X8-12.125 | Non-marking | 457 | 18.0 | 203 | 8.0 | 6625/5434 | 5908/4960 | 4806/4729 | 7088 | 5203 | 4729 | 3549 |
| DOB-1157-NT | 21X7-15 | Non-marking | 533 | 21.0 | 178 | 7.0 | 6327/5192 | 5644/4740 | 4597/3759 | 6779 | 4971 | 4519 | 3384 |
| DOB-1158-NT | 21X8-15 | Non-marking | 533 | 21.0 | 203 | 8.0 | 7452/6118 | 6658/5589 | 5412/4431 | 7981 | 5853 | 5324 | 3990 |
| DOB-2168-NT | 22X8-16 | Non-marking | 559 | 22.0 | 203 | 8.0 | 7716/6338 | 6889/5787 | 5600/4597 | 8267 | 6063 | 5512 | 4134 |
| DOB-2169-NT | 22X9-16 | Non-marking | 559 | 22.0 | 229 | 9.0 | 8885/7297 | 7937/6669 | 6460/5291 | 9524 | 6989 | 6349 | 5390 |

LLANTAS LISAS NON - MARKING



El compuesto superior que no deja marcas brinda comodidad al conductor, una vida útil prolongada y una excelente solución para la colocación limpia de neumáticos.



| PART # | SIZE | COMPOUND | OVERALL DIAMETER | | SECTION WIDTH | | LOAD LIMITS (LBS) | | | OTHER VEHICLES | | | |
|-------------|---------------|-------------|------------------|--------|---------------|--------|------------------------------|-----------------------------|------------------------------|----------------|-------------------|-------------------|--------------------|
| | | | mm | inches | mm | inches | Forklifts | | | 6km/h | 10km/h (6 mph) | 15km/h (9 mph) | 25km/h (15 mph) |
| | | | | | | | 10km/h (6 mph) load/steer | 15km/h (9mph) load/steer | 25km/h (15mph) load/steer | | | | |
| DOB-4084-NS | 14X4.5-8 | Non-marking | 356 | 14.0 | 114 | 4.5 | 2579/2116 | 2304/1929 | 1874/1312 | 2767 | 2028 | 1841 | 1378 |
| DOB-6105-NS | 16X5-10.5 | Non-marking | 406 | 16.0 | 127 | 5.0 | 3329/2734 | 2965/2491 | 2414/1973 | 3560 | 2612 | 2370 | 1786 |
| DOB-6106-NS | 16X6-10.5 | Non-marking | 406 | 16.0 | 152 | 6.0 | 4211/3461 | 3759/3164 | 3064/2513 | 4519 | 3307 | 3009 | 2260 |
| DOB-1551-NS | 15X5-11.25 | Non-marking | 381 | 15.0 | 127 | 5.0 | 3064/2513 | 2734/2293 | 2227/1819 | 3285 | 2403 | 2183 | 1642 |
| DOB-6115-NS | 16.25X5-11.25 | Non-marking | 413 | 16.2 | 127 | 5.0 | 3362/2756 | 2998/2513 | 2436/1995 | 3594 | 2635 | 2403 | 1797 |
| DOB-6116-NS | 16.25X6-11.25 | Non-marking | 413 | 16.2 | 152 | 6.0 | 4233/3472 | 3770/3175 | 3064/2513 | 4530 | 3318 | 3020 | 2260 |
| DOB-8126-NS | 18X6-12.125 | Non-marking | 457 | 18.0 | 152 | 6.0 | 4619/3792 | 4123/3461 | 3351/2756 | 4949 | 3627 | 3296 | 2480 |
| DOB-8127-NS | 18X7-12.125 | Non-marking | 457 | 18.0 | 178 | 7.0 | 5622/4619 | 5016/4211 | 4079/3351 | 6019 | 4420 | 4012 | 3009 |
| DOB-8128-NS | 18X8-12.125 | Non-marking | 457 | 18.0 | 203 | 8.0 | 6625/5434 | 5908/4960 | 4806/4729 | 7088 | 5203 | 4729 | 3549 |
| DOB-1157-NS | 21X7-15 | Non-marking | 533 | 21.0 | 178 | 7.0 | 6327/5192 | 5644/4740 | 4597/3759 | 6779 | 4971 | 4519 | 3384 |
| DOB-1158-NS | 21X8-15 | Non-marking | 533 | 21.0 | 203 | 8.0 | 7452/6118 | 6658/5589 | 5412/4431 | 7981 | 5853 | 5324 | 3990 |
| DOB-2168-NS | 22X8-16 | Non-marking | 559 | 22.0 | 203 | 8.0 | 7716/6338 | 6889/5787 | 5600/4597 | 8267 | 6063 | 5512 | 4134 |
| DOB-2169-NS | 22X9-16 | Non-marking | 559 | 22.0 | 229 | 9.0 | 8885/7297 | 7937/6669 | 6460/5291 | 9524 | 6989 | 6349 | 5390 |
| DOB-2201-NS | 22X12-16 | Non-marking | 559 | 22.0 | 305 | 12.0 | 12375/10175 | 11066/9295 | 8998/7370 | 13371 | 9829 | 8855 | 6641 |
| DOB-2812-NS | 28X12-22 | Non-marking | 711 | 28.0 | 305 | 12.0 | 14828/12188 | 13244/11132 | 10780/8833 | 16012 | 11810 | 10604 | 7953 |

LLANTAS MACIZAS MINI CARGADOR



El diseño de tacos extra profundos proporciona un patrón agresivo de la banda de rodadura para máxima tracción. A prueba de pinchazos. El diseño elimina el tiempo de inactividad.



| PART # | SIZE | RIM | COMPOUND | OVERALL DIAMETER | | SECTION WIDTH | | LOAD LIMITS (LBS) | | OTHER VEHICLES | | |
|--------------|----------|------|----------|------------------|--------|---------------|--------|-----------------------------|-------|------------------|--------------------|--------------------|
| | | | | mm | inches | mm | inches | Counterbalanced Lift Trucks | | 6km/h (6 mph) | 10km/h (15 mph) | 25km/h (15 mph) |
| | | | | | | | | load | steer | | | |
| DOB-10165-LH | 31X10-20 | 7.50 | Standard | 790 | 31.1 | 251 | 9.9 | N/A | N/A | N/A | N/A | 6028 |
| DOB-10165-RH | 31X10-20 | 7.50 | Standard | 790 | 31.1 | 251 | 9.9 | N/A | N/A | N/A | N/A | 6028 |
| DOB-12165-LH | 33x12-20 | 7.50 | Standard | 833 | 32.8 | 287 | 11.3 | N/A | N/A | N/A | N/A | 7139 |
| DOB-12165-RH | 33x12-20 | 7.50 | Standard | 833 | 32.8 | 287 | 11.3 | N/A | N/A | N/A | N/A | 7139 |



